

eWeigh

iLivestock eWeigh App

eTagReader

User

Instructions

eWeigh

The iLivestock eWeigh is easy to use and works seamlessly with iLivestock software and hardware. The eWeigh can also be used in conjunction with other stick readers and the iLivestock app.



Turning on your eWeigh

Press and hold down the 'On / Off' button to turn on the eWeigh. Once turned on the 'On / Off' light Indicator will flash red.

BlueTooth is permanently on when the eWeigh is turned on, so no further settings need to be addressed.

Connecting your eWeigh to weigh bars

Simply screw in the left and right weigh bar cables to the corresponding cable connectors on the eWeigh.

You can work with both cables connected or just one, depending on your set-up.

You'll get an opportunity to address the settings of the weigh bars when the eWeigh is connected to the iLivestock app.

Your eWeigh will come with a plug and cable in order to charge from the mains.

Connect the cable to the plug and then screw the charge cable to the Power Cable Connector found at the bottom centre of the eWeigh.

Once plugged into charge the **External Power Connected** light indicator will go red. The eWeigh can also be used while plugged into charge.

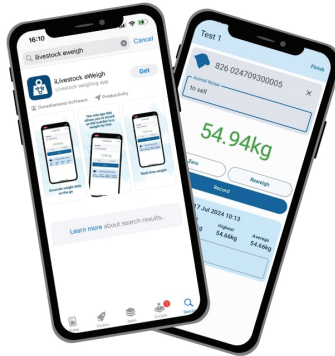
To turn off the eWeigh press and hold down on the On/Off button until the red 'on' light goes off.

iLivestock eWeigh App

If you have an eWeigh, using the eWeigh app will allow you to run weigh sessions and export your data for quick and easy weighing

How to find and download the eWeigh App

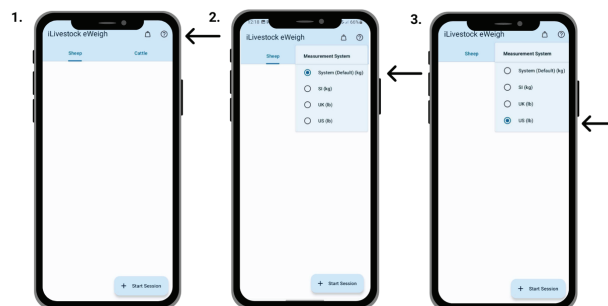
You can download the FREE eWeigh app from either the App Store for iOS Apple devices or the PlayStore for Android devices. No sign up required!



Simply go to the relevant app store below to find the eWeigh App and download to your device



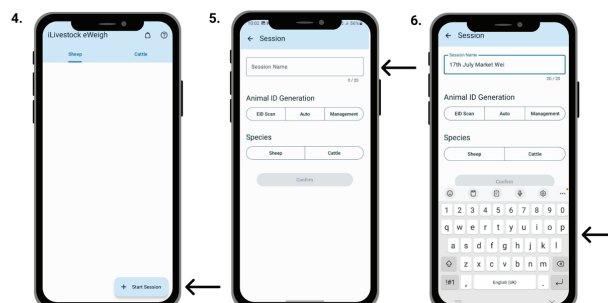
How to use the eWeigh App



Step 1: Once downloaded, open the app and tap the **Measurement** icon at the top right of the screen

Step 2: Make sure the '**Measurement System**' is set to your weighing requirements -you can set this to either kgs or lbs.

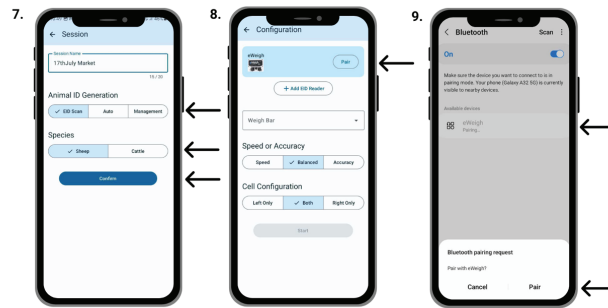
Step 3: Tap the correct measurement and the '**Measurement System**' selector will then close.



Step 4: Next tap the '+ Start Session' button at the bottom right of the screen

Step 5: Tap into the 'Session Name' box to bring up your key board

Step 6: Add in your session name so this can be easily recognisable when you need to look back at it.



Step 7: Under **Animal ID Generation**, you can select the following options to add animal IDs to the weigh session.

- **EID Scan** = Select this option if you want to scan and record EID tags against your animals
- **Auto** = Select this option if you want the system to automatically give your animals IDs - this will simply be animal 1, 2, 3, 4 etc, per session.
- **Management** = Select this option if you want to manually add in Visual ID or Management tag ID against each animal as you weigh.

Next under **Species** select either Sheep or Cattle depending on the species you are weighing.

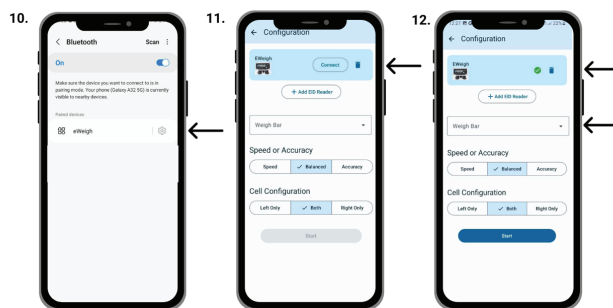
Step 8: Now you've set up the session details, you'll just need to configure the hardware.

Make sure your eWeigh weigh head is turned on, the built in BlueTooth will automatically be activated

Then tap '**Pair**' next to the eWeigh on the app, as shown in the configuration screen grab 8, above.



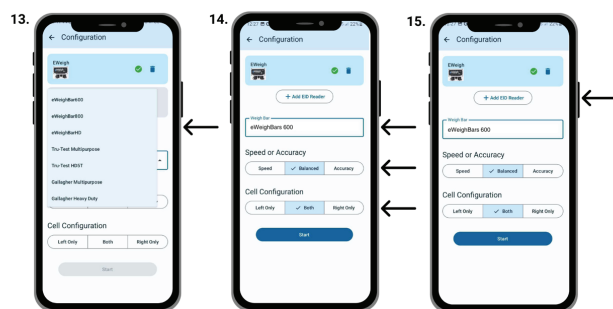
Step 9: Next you'll be taken to the Bluetooth screen on your device. You'll be prompted to Pair the device to the eWeigh, tap '**Pair**' to complete the pairing stage.



Step 10: Once paired, you'll see eWeigh under Paired Devices on your device and you can then tap the back arrow and go back to the eWeigh app.

Step 11: Once back on the configuration screen, tap '**Connect**' to connect the eWeigh to the app.

Step 12: The eWeigh will show a green tick once connected successfully and we can now move to the **Weigh Bar** configuration by tapping the Weigh Bar drop down field.



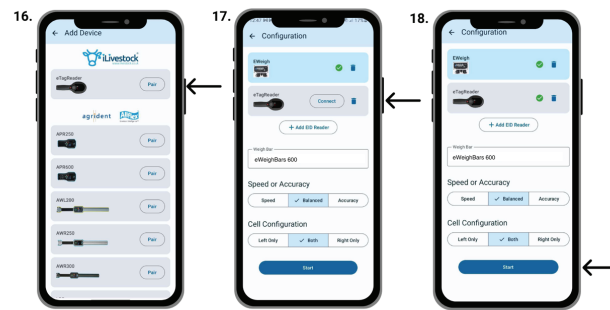
Step 13: From the drop-down list, select the weigh bars you will be using, making sure to select the relevant size and make where possible.

Step 14: Under the **Speed** or **Accuracy** heading, select Speed, Balanced, or Accuracy depending on the type of weighing you are doing.

We recommend balanced, but if wanting to run a lot of animals through at speed, most likely for sheep, you might want to choose Speed.

Under **Cell Configuration** select the number of weigh bars connected and if only one bar, select the relevant side the bar is connected to on the eWeigh (Right, Left or Both)

Step 15: If using EID Tags for the weigh session, now tap '**+ EID Reader**' to select and connect your EID reader



Step 16: You'll now be taken to a list of compatible EID readers, where you can select the relevant reader and tap 'Pair' to be taken through any pairing steps if they are required.

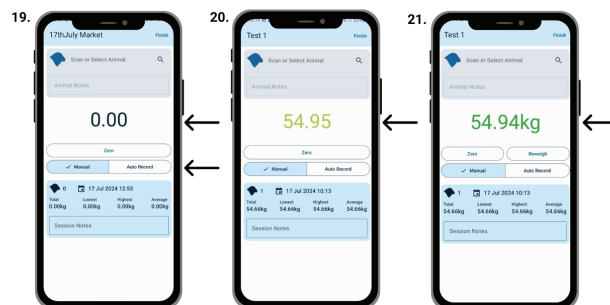
Make sure your EID reader is switched on and BlueTooth is turn to 'On' to connect successfully.

Step 17: Once the reader is paired tap '**Connect**' next to the reader

Step 18: A green tick will now confirm the reader is successfully connected and you can head to the bottom of the screen and tap '**Start**' to start the weigh session.

You are now ready to start weighing!

How to weigh with EID



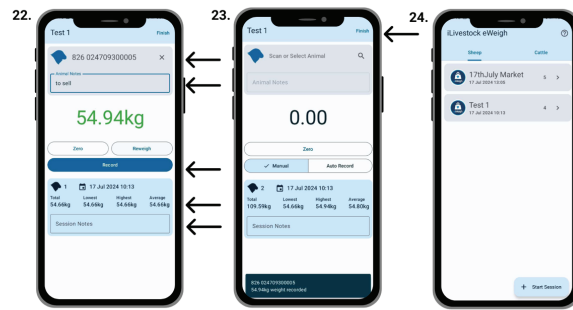
Step 19: Now you are in Weigh mode, you can select whether you want to manually record the weight or whether you want this to happen automatically.

The benefit of manual is you get to decide if you think the weight is right by tapping '**Record**' to confirm and save the weight against the animal.

The benefit of '**Auto**' is as soon as you scan the EID of the animal, after the weight stabilises, this will automatically record the weight and get ready to record the next animal.

Step 20: As the animal steps onto the scales you'll see the weight change and appear in different colours before it stabilises.

Step 21: When the weight stabilises, it will go dark green and the unit measurement will appear next to the weight, you'll also hear a bell confirmation sound.



Step 22: Once the weight has stabilised you can then scan the animal EID, and the scanned EID number will appear at the top of the screen.

If you think the weight was taken incorrectly for any reason, you can tap the 'Reweigh' button.

You can also add a note against the animal in the '**Animal Notes**' field

If you are happy with the weight and you are set to manual record, you can tap '**Record**' to save the weight.

(Note!: If set to Auto Record, once you've scanned the EID tag, the weight will save automatically without having to tap record)

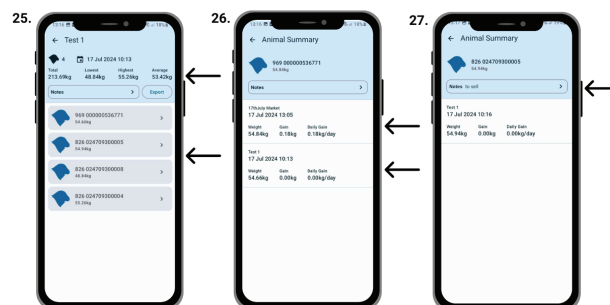
You'll see the animal weights will appear in the session details section below the record button. As you add more weigh sessions for the same animal onto the app, when using EID or the same animal IDs the app will identify the animal and start to amalgamate the animals weigh data here.

Step 23: Once the first animal weight has been recorded, the app will be ready for the next animal and the scales will zero again.

When all the animals have been weighed, tap '**Finish**' at the top right of the screen to finish the weigh session.

Step 24: Your weigh session will then sit in a list under the relevant species heading on the main screen.

How to view and export your Weigh Session

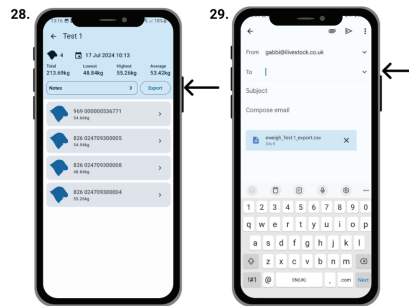


Step 25: Tap the weigh session card to open it and view the individual animals within the session.

Note the session summary at the top of the screen.

Step 26: Tap into any of the individual animals to see the weighing history details.

Step 27: You can add or view notes against the animal here too.



Step 28: To send yourself a weigh session .CSV export, tap '**Export**' at the top of the screen of an opened session.

Next, select your email from the list of applications to share the file with from the options that may pop up on your device.

Step 29: The .CSV will attach to an email from yourself, where you can tap in your email address and email back to you.

Your weight file will appear as per the below .CSV format once opened.

Possible Data Loss Some features might be lost if you save this workbook in the comma-delimited (

	A	B	C	D	E
1	Test 1				
2	17/07/2024 10:13				
3					
4	EID	Management	Species	Weight	Timestamp
5	969 000000536771		Sheep	54.65729885	17/07/2024 10:13
6	826 024709300005		Sheep	54.93605061	17/07/2024 10:16
7	826 024709300008		Sheep	48.8369997	17/07/2024 10:17
8	826 024709300004		Sheep	55.25940075	17/07/2024 10:17
9					
10					

eTagReader

The iLivestock eTagReader is easy to use and works seamlessly with iLivestock software and hardware. The eTagReader can also be used in conjunction with other weigh heads and the iLivestock app.



Turning on your eTagReader

Press and hold down the scan button a couple of times until the reader beeps and the screen turns on

Configure the settings on your eTagReader:



SETTINGS

Go to and press the **Menu/OK** button to turn on the screen display.

Use the arrow keys to scroll across to the '**Settings**' icon and then press the **Menu/OK** button to select.

SETUP

TReader name

This needs to be set to **eTagReader** - exactly as it is spelt here; all one word with capital letters for the T and the R.

To add the name, select **Reader Name** from the SETUP list in settings, by tapping **Menu/OK** when this is highlighted. This will then display a character selection page where you can scroll and select the letters to make the name **eTagReader**. Once this has been inputted, use the arrow buttons to highlight the '**Save**' option and then press the **Menu/OK** button.

You can see the reader's name in the '**About**' section.

DATE/TIME

Year / Month / Day / Hour - These will already be set-up upon receipt, but can easily be changed if required, by using the arrow keys to scroll and select and the **Menu/OK** button to confirm the selection.

Time Format

12hr / 24hr - Change the time format to suit your needs.

Auto Update

Enable allows the stick to get automatic updates.

READ MODE

Single / Continuous / Auto

- **Set to Single** if you want to physically tap the Scan button to read each tag one by one
- **Set to continuous** if running animals through a race or scanning a shed of sheep/cattle and need to continuously scan - (Note! this does make a continuous beeping sound when scanning)
- **Set to Auto** if you want to control the continuous scanning via the Scan button - press and hold to start continuous scanning and then press again to stop. Press once for single scan.

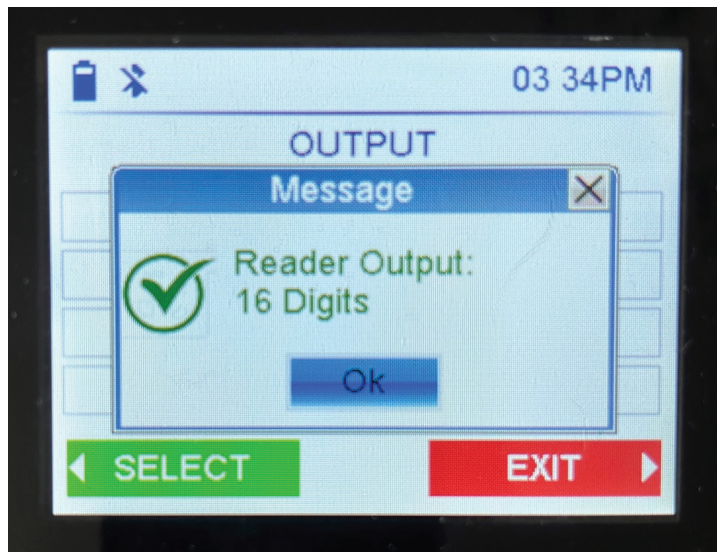
ID FORMAT

We recommend the 15- or 16-digit **Display** and **Output** options. **15 digits (without a gap in EID) 16 Digits (with a gap in EID)** unless your EIDs are specifically HEX or ISO.

Use the arrow keys and the Menu/Okay button to scroll, select and confirm the required format.

- Example 15 Digit EID = 826024709300008
- Example 16 Digit EID = 826 024709300008
- Example HEX EID = 8200CE85C0C9FF28
- Example ISO EID = A004000826024709300008

The reader will then confirm a Reader Display / Output Confirmation



PREFERENCE

Brightness

We recommend keeping this at 7, so the screen is nice and bright

LED Indicators

Keep this set to ON so the LED indicators show on screen for your settings

Vibrate

Vibrates upon scanning. We recommend keeping this on for additional confirmation of a scan

Sound

We recommend keeping this ON, if you want a beep confirmation of scanning

Continuous Read Time

Adjust the continuous read time in increments of 10 minutes, up to an hour, for when your stick is set to '**Continuous**' in the '**Read Mode**' settings - (see READ MODE above)

Auto Off

Here you can change whether you want the stick to turn off automatically when not in use and if Auto Turn off is enabled, you can set a time limit for the Auto Turn Off too. We recommend using the longest time of 60 mins if you want Auto Off switched on.

Restore

Here you can restore to factory settings

Connection

Here you can choose whether you want to connect to another device, such as a smartphone or weigh scale directly via Bluetooth or a cable, we recommend BlueTooth for ease of use. To use Bluetooth, ensure BlueTooth is turned on (see **BlueTooth** below)

Currently the eTag Reader does not connect to your PC or MAC for downloads. All data can be accessed via the iLivestock app

Info

This summarises all of the settings and what they are switched to. Go to the relevant settings within Settings to amend these.



Bluetooth

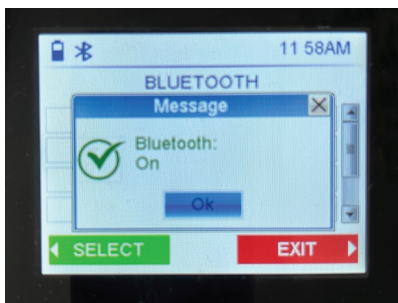
To use the eTagReader with the iLivestock app, you'll need Bluetooth switched to **ON**

Use the arrow keys to scroll across to the '**Bluetooth**' icon and then press the **Menu/OK** button to select.

Press the **Menu/OK** button again to highlight the **On/Off** option and use the arrows to select ON and use the **Menu/OK** button to confirm.

The reader will then display '**Bluetooth On**' confirmation

(Note! When you leave the screen the Bluetooth icon will have a line through it, until it is connected to the app)



Press EXIT (left arrow) to leave the menu



GPS

We recommend this is turned OFF unless GPS tracking is required.



ABOUT

This confirms the reader name, serial number, firmware number, hardware number and model



MEMORY

This will show you how much memory is taken and available on the stick, including how many ID's are saved and how many sessions have been used



SESSION

Here you can create, store and delete EID tagging sessions or groups.

Use the scroll and Menu/OK button to scroll to, and select Session

Create New Session

Select **Create** to create a session as a sequential numbered session/group

Select **Create with Name** to then add a specific name to the session/group - you'll then be taken to a letter selector to scroll and tap the letters for the name.

Open Session

Select **Open** to be taken to a list of **Open Sessions** to scroll through and then select and view the session. Within the selected open session, you can then scroll through the tags within the session and view or delete tags as required.

Transmit

This option is not required.

Clear Session

Select **Current** to be taken to a confirmation screen to OK or Cancel clearing the current session you are in.

Choose **Select** to be taken to a list of session that you can scroll through, select and then be taken to a confirmation screen to OK or Cancel clearing the selected session.

Select **ALL** to clear all sessions and to be be taken to a confirmation screen to OK or Cancel



POWER OFF

Scroll and select the Power Off button to turn of the eTagReader.

You will then be shown a confirmation screen to use the arrow keys to select Yes or NO and press the Menu/OK button to confirm